



2777 East Camelback Road, Suite 230
 Phoenix, Arizona 85016
 (480) 994-8155 • (480) 994-8599
 www.GPE1.com



Kathleen M. Morgan, CCIM
 Executive Vice President
 (602) 809-1048
 kmorgan@gpe1.com

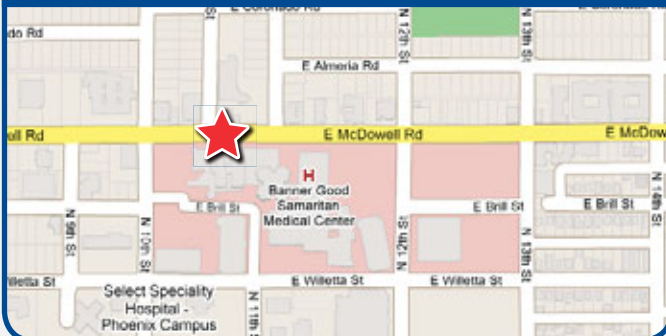


Trisha A. Talbot, CCIM
 Senior Vice President
 (602) 369-6864
 ttalbot@gpe1.com

COMMERCIAL ADVISORS

1030 E MCDOWELL - Phoenix, AZ 85006

Prime Location



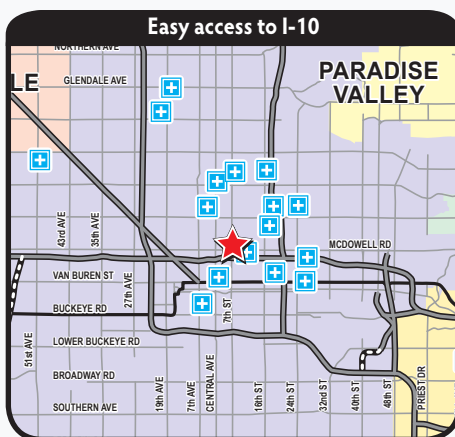
1030 E MCDOWELL

NE Corner of N Dayton St & E McDowell Rd

Building Size	3,197 SF
Availability	Entire Building - 3,197 SF
Lease Rate	\$12.00/SF NNN (Triple Net)
Annual Increases	\$0.50
Tenant Improvements	Negotiable
Operating Expenses	Triple Net
Parking	Ample



Medical Suite Available for Lease Across the Street from Banner Good Samaritan Hospital



AMENITIES

- Across the street from Banner Good Samaritan Hospital
- Shares a parking lot with surgery center
- Convenient freeway access
- Five (5) treatment rooms



GPE Commercial Advisors provides full service commercial real estate solutions. One call and you have instant access to expert knowledge, research and resources. We successfully match buyers with sellers and tenants with landlords.



2777 East Camelback Road, Suite 230
 Phoenix, Arizona 85016
 (480) 994-8155 • (480) 994-8599
 www.GPE1.com



Kathleen M. Morgan, CCIM
 Executive Vice President
 (602) 809-1048
 kmorgan@gpe1.com



Trisha A. Talbot, CCIM
 Senior Vice President
 (602) 369-6864
 ttalbot@gpe1.com

COMMERCIAL ADVISORS

1030 E MCDOWELL - Phoenix, AZ 85006

AERIAL MAP



1030 E. McDowell Rd.



2777 East Camelback Road, Suite 230
 Phoenix, Arizona 85016
 (480) 994-8155 • (480) 994-8599
 www.GPE1.com



Kathleen M. Morgan, CCIM
 Executive Vice President
 (602) 809-1048
 kmorgan@gpe1.com

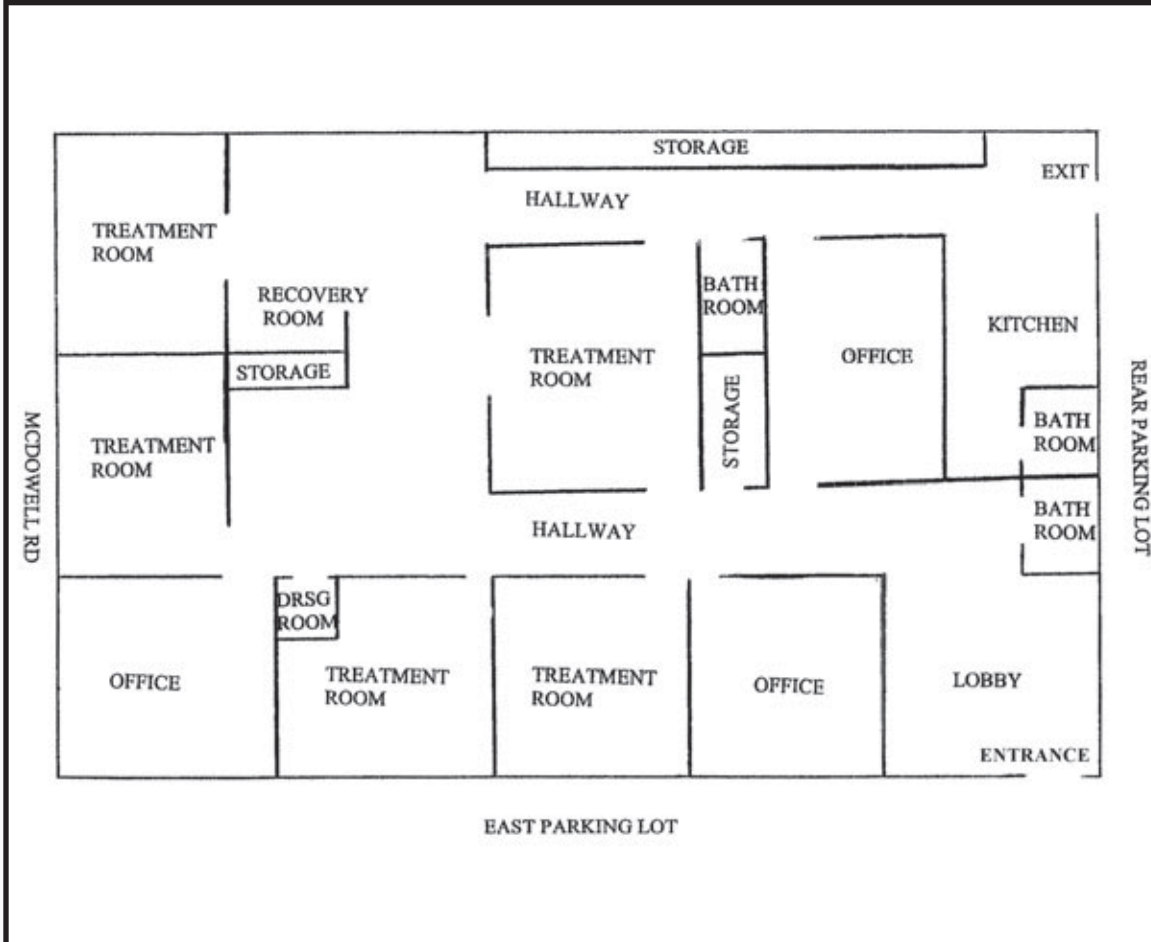


Trisha A. Talbot, CCIM
 Senior Vice President
 (602) 369-6864
 ttalbot@gpe1.com

COMMERCIAL ADVISORS

1030 E MCDOWELL - Phoenix, AZ 85006

FLOOR PLAN • 3,197 SF



SITE PLAN

