

▼ FIRST FINANCIAL PLAZA

Cross Roads	North of US 60 on Alma School (easy access to US 60 and Loop 101)	
Building Size	26,789 SF	
Availability	Suite 100	6,712 RSF
	Suite 101	1,737 RSF
	Suite 200	1,340 RSF
	Suite 210	1,598 RSF
	Suite 250	560 RSF
	Suite 260	1,451 RSF
	Suite 275	1,526 RSF
	Suite 290	1,111 RSF
	<i>Suites 250, 275, and 290</i>	
Lease Rate	\$13.50 per RSF, Full Service	
Annual Increases	\$0.50	
Tenant Improvements	Negotiable	
Load Factor	8.0%	
Operating Expenses	Base Year	
Parking	Ample Parking Covered, Reserved Parking Available	
Amenities	<ul style="list-style-type: none"> • Next to Fiesta Mall • Monument Signage Available on Alma School Road 	

1550 S Alma School Rd Mesa, AZ 85210



courtesy of mapquest.com



For more information, contact:

Kathleen M. Morgan, CCIM
 (480) 994-1798
 kmorgan@gpe1.com

Trisha A. Talbot, CCIM
 (480) 423-7916
 ttalbot@gpe1.com

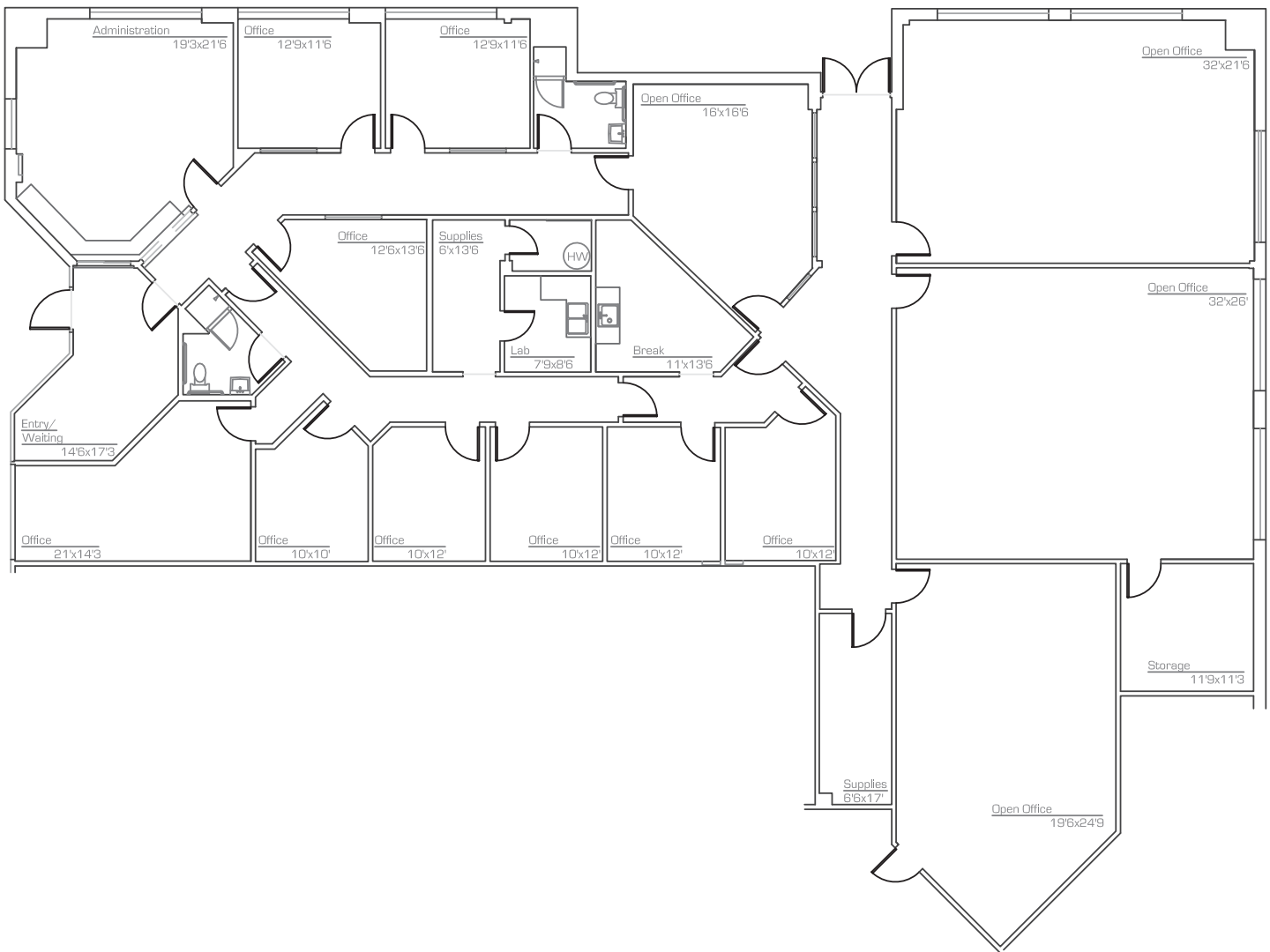


FIRST FINANCIAL PLAZA

1550 S Alma School Rd | Mesa, AZ 85210



Suite 100 • 6,712 RSF



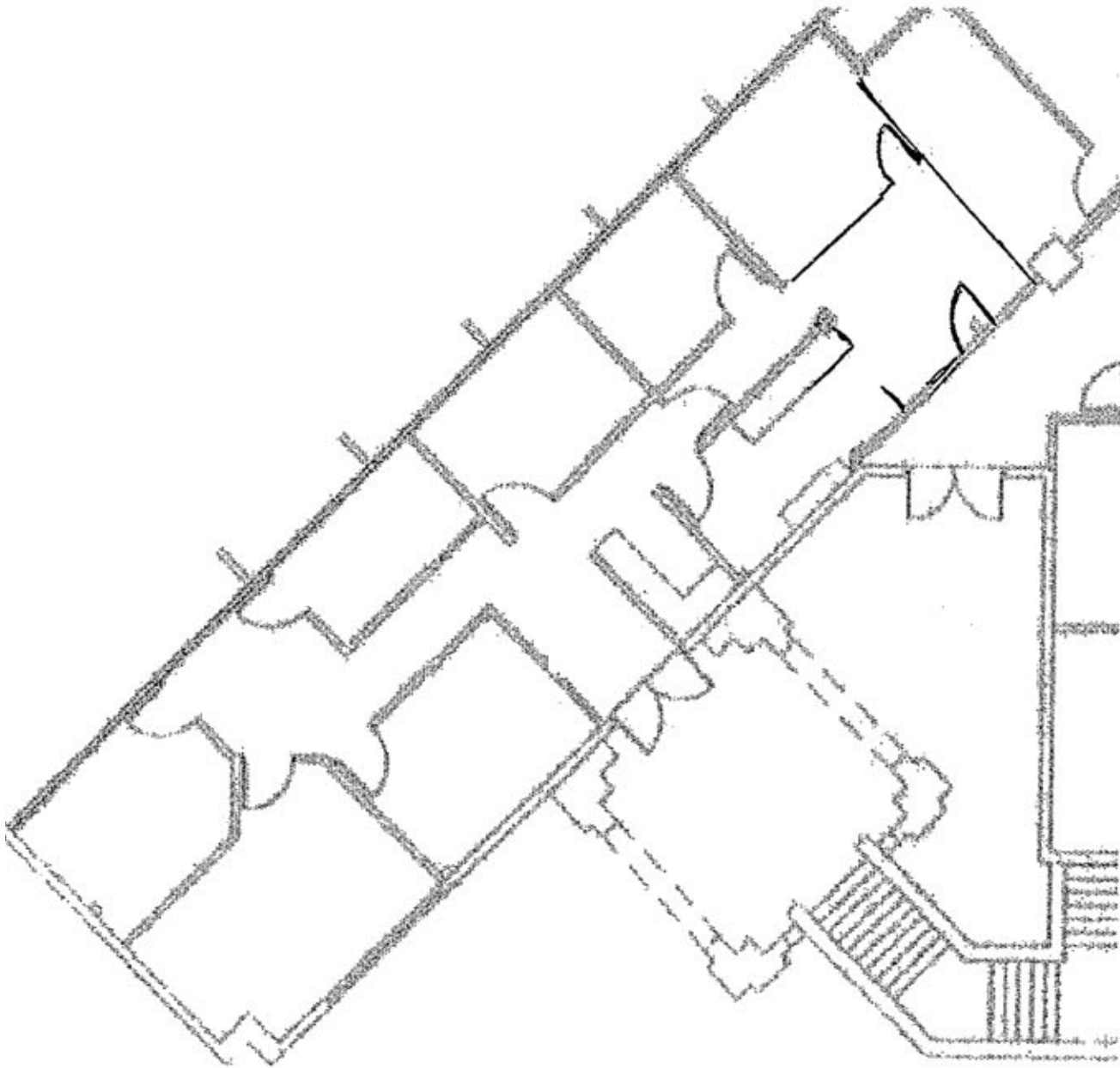


FIRST FINANCIAL PLAZA

1550 S Alma School Rd | Mesa, AZ 85210



Suite 101 • 1,737 RSF



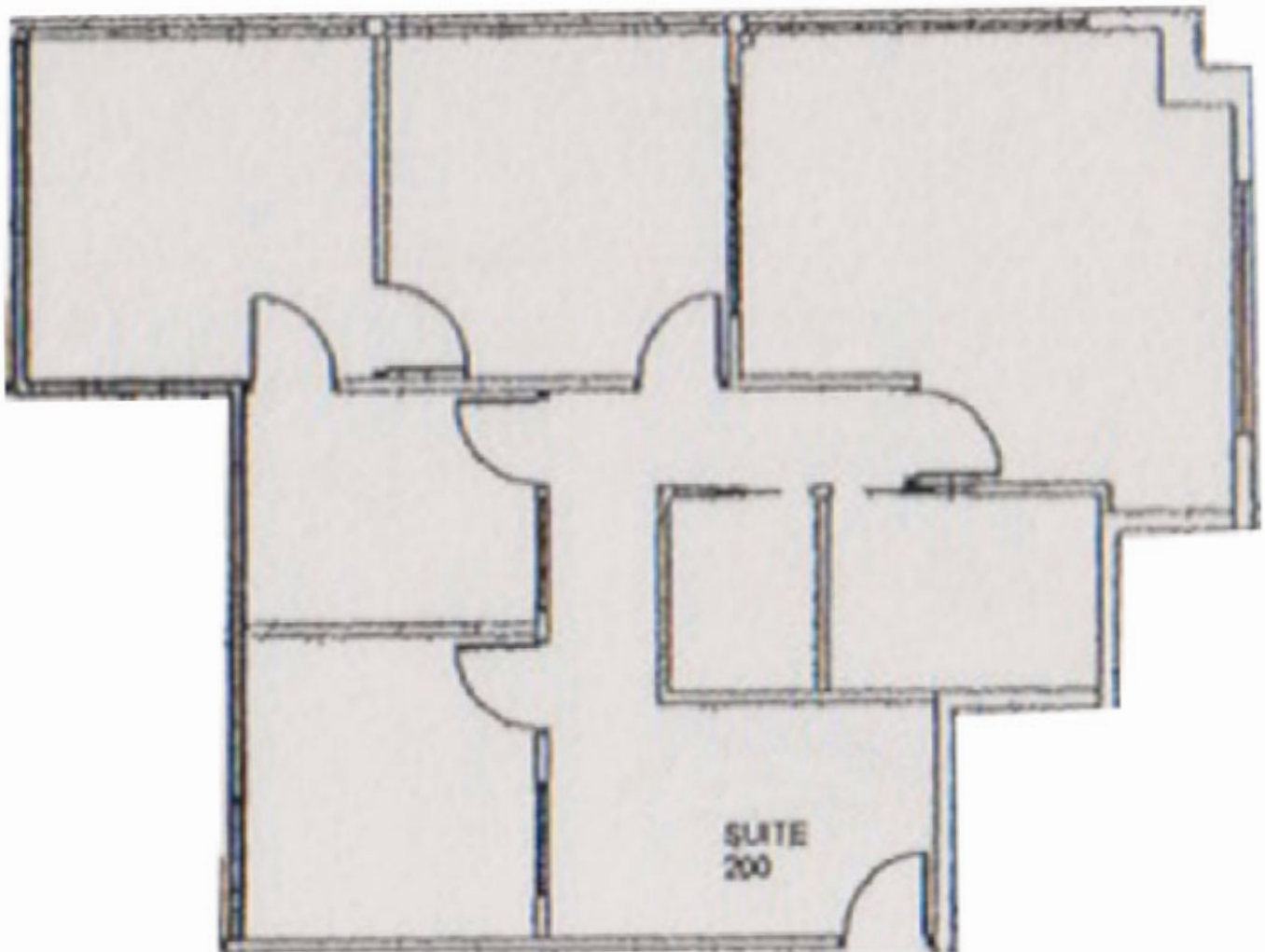


FIRST FINANCIAL PLAZA

1550 S Alma School Rd | Mesa, AZ 85210



Suite 200 • 1,340 RSF



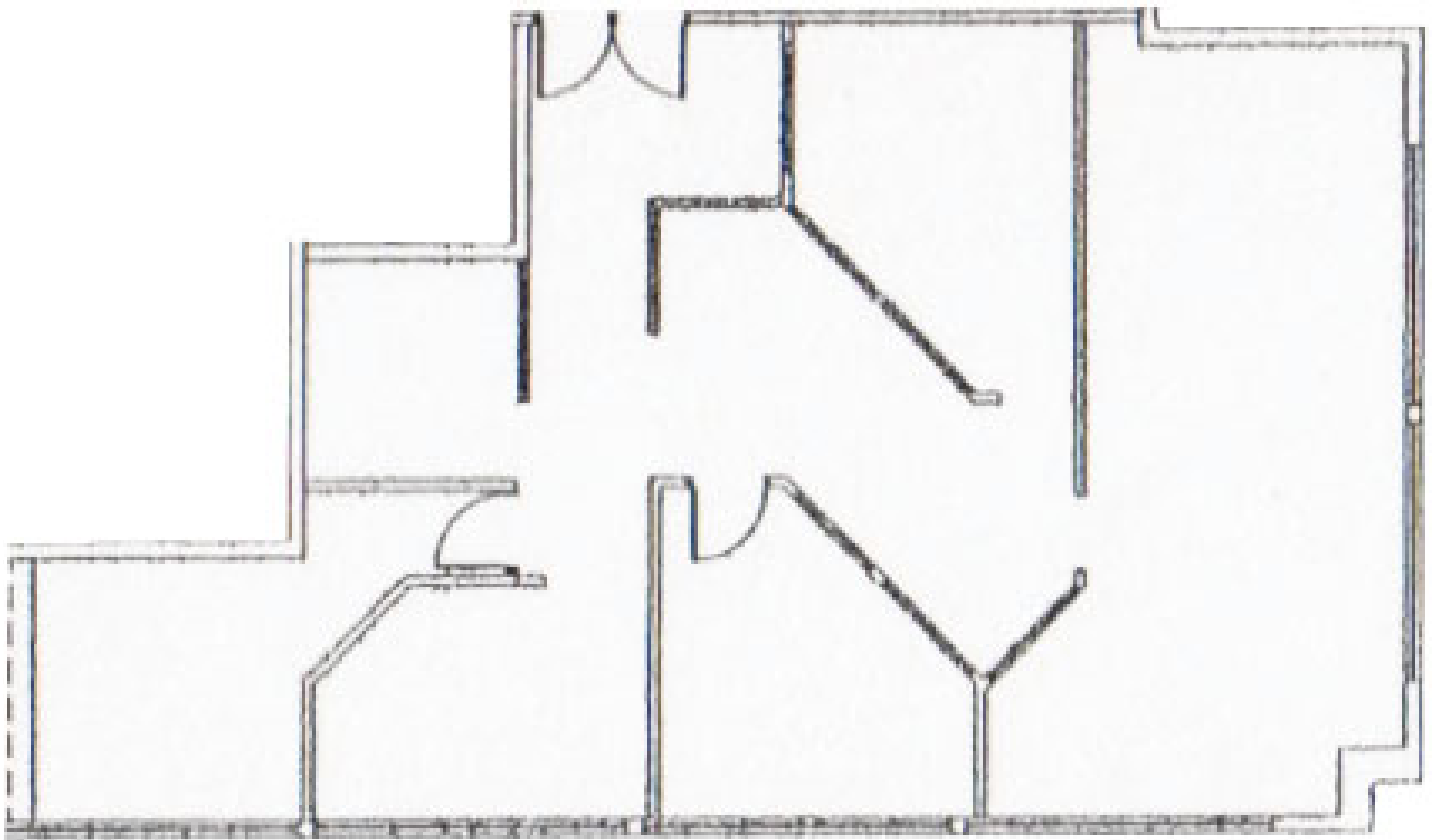


FIRST FINANCIAL PLAZA

1550 S Alma School Rd | Mesa, AZ 85210



Suite 210 • 1,598 RSF



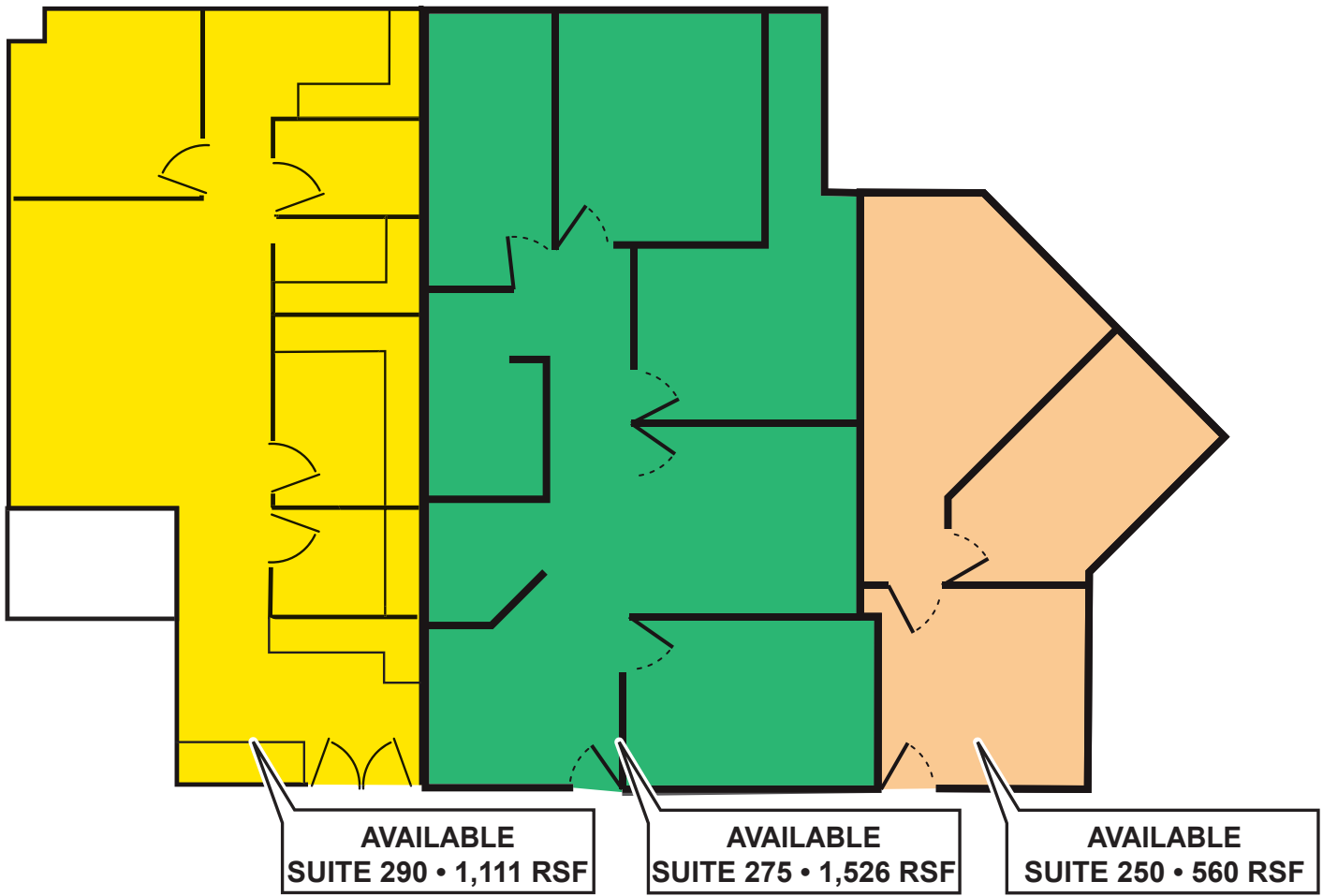


FIRST FINANCIAL PLAZA

1550 S Alma School Rd | Mesa, AZ 85210



Suite 250, 275 Suite 290
3,197 RSF Contiguous Space



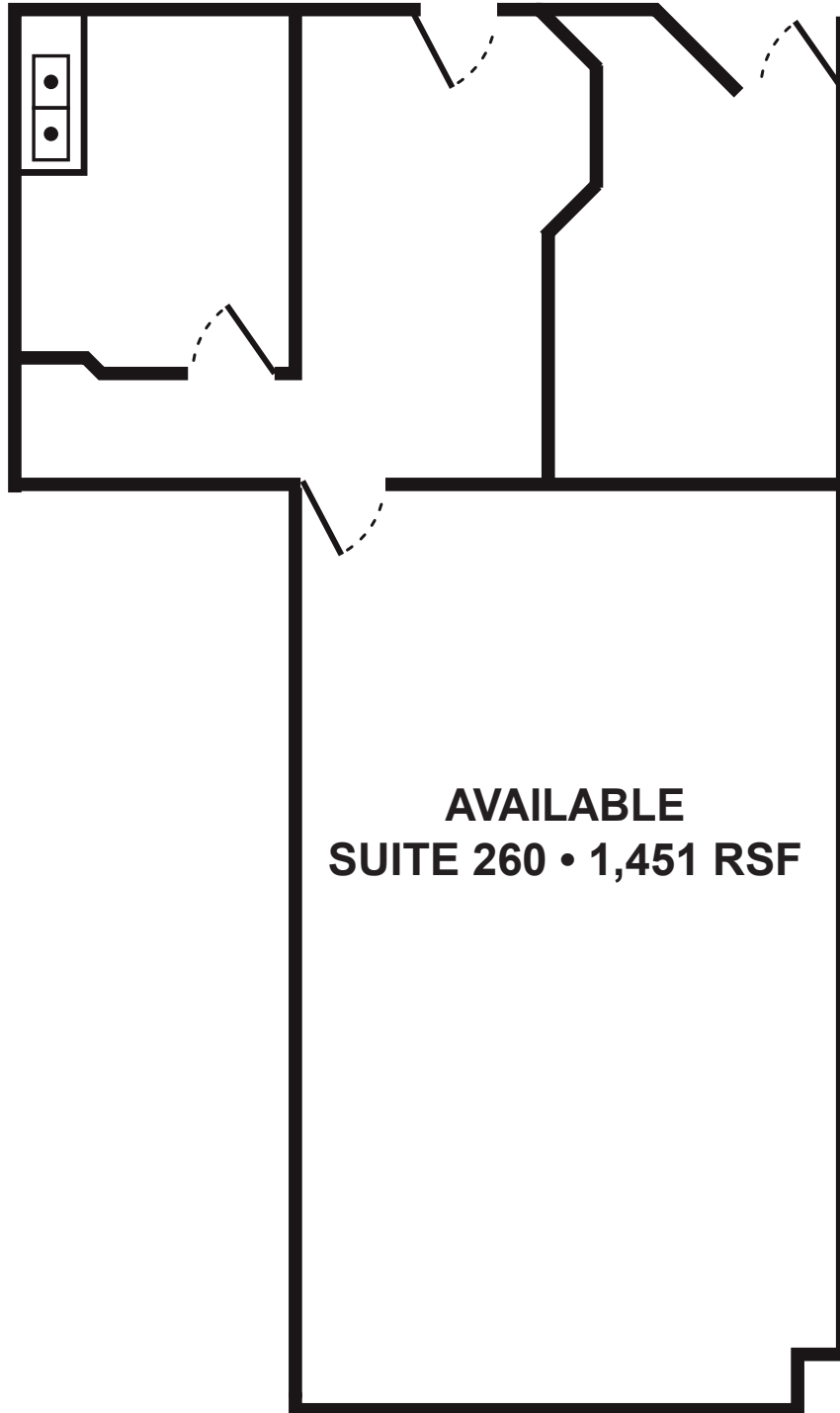


FIRST FINANCIAL PLAZA

1550 S Alma School Rd | Mesa, AZ 85210



Suite 260 • 1,451 RSF



**AVAILABLE
SUITE 260 • 1,451 RSF**



FIRST FINANCIAL PLAZA

1550 S Alma School Rd | Mesa, AZ 85210



Suite 290 • 1,111 RSF

