



2777 East Camelback Road, Suite 230
 Phoenix, Arizona 85016
 (480) 994-8155 • (480) 994-8599
 www.GPE1.com



Nicholas A. Pelusio
 Executive Vice President
 (602) 505-3010
 nap@gpe1.com

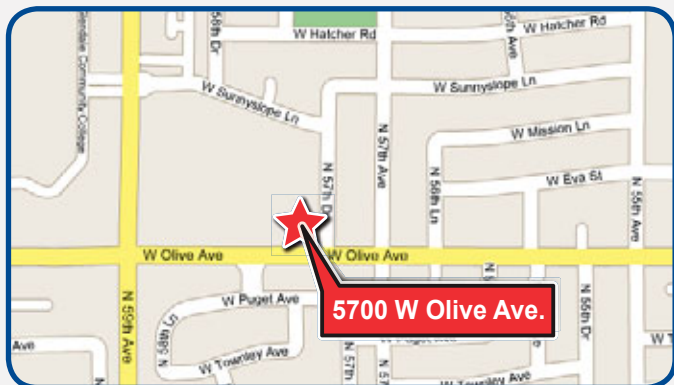


Tracey Galligan
 Associate Vice President
 (480) 423-7927
 tgalligan@gpe1.com



COMMERCIAL ADVISORS

OLIVE WEST PROFESSIONAL PLAZA - Glendale, AZ



5700 W Olive Ave.



Nicely Built-Out Dental Space Available for Lease in Northwest Phoenix

OLIVE WEST PROFESSIONAL PLAZA

5700 W Olive Ave • Glendale, AZ 85302

Project	13,954 SF Medical Building		
Availability	Suite 101	3,264 RSF	Dental Build-Out
	Divisible - See Attached Plans		
	Suite 107	1,067 RSF	Dental Build-Out
Lease Rate	\$15.50/SF, Modified Gross		
Tenant Improvements	Negotiable		
Parking	5.30:1,000 SF		
2008 Demographics	Radius	Population	Household Income
	1-Mile	18,868	\$46,392
	3-Mile	166,611	\$46,200
	5-Mile	448,442	\$45,614



GPE Commercial Advisors provides full service commercial real estate solutions. One call and you have instant access to expert knowledge, research and resources. We successfully match buyers with sellers and tenants with landlords.



2777 East Camelback Road, Suite 230
Phoenix, Arizona 85016
(480) 994-8155 • (480) 994-8599
www.GPE1.com



Nicholas A. Pelusio
Executive Vice President
(602) 505-3010
nap@gpe1.com



Tracey Galligan
Associate Vice President
(480) 423-7927
tgalligan@gpe1.com

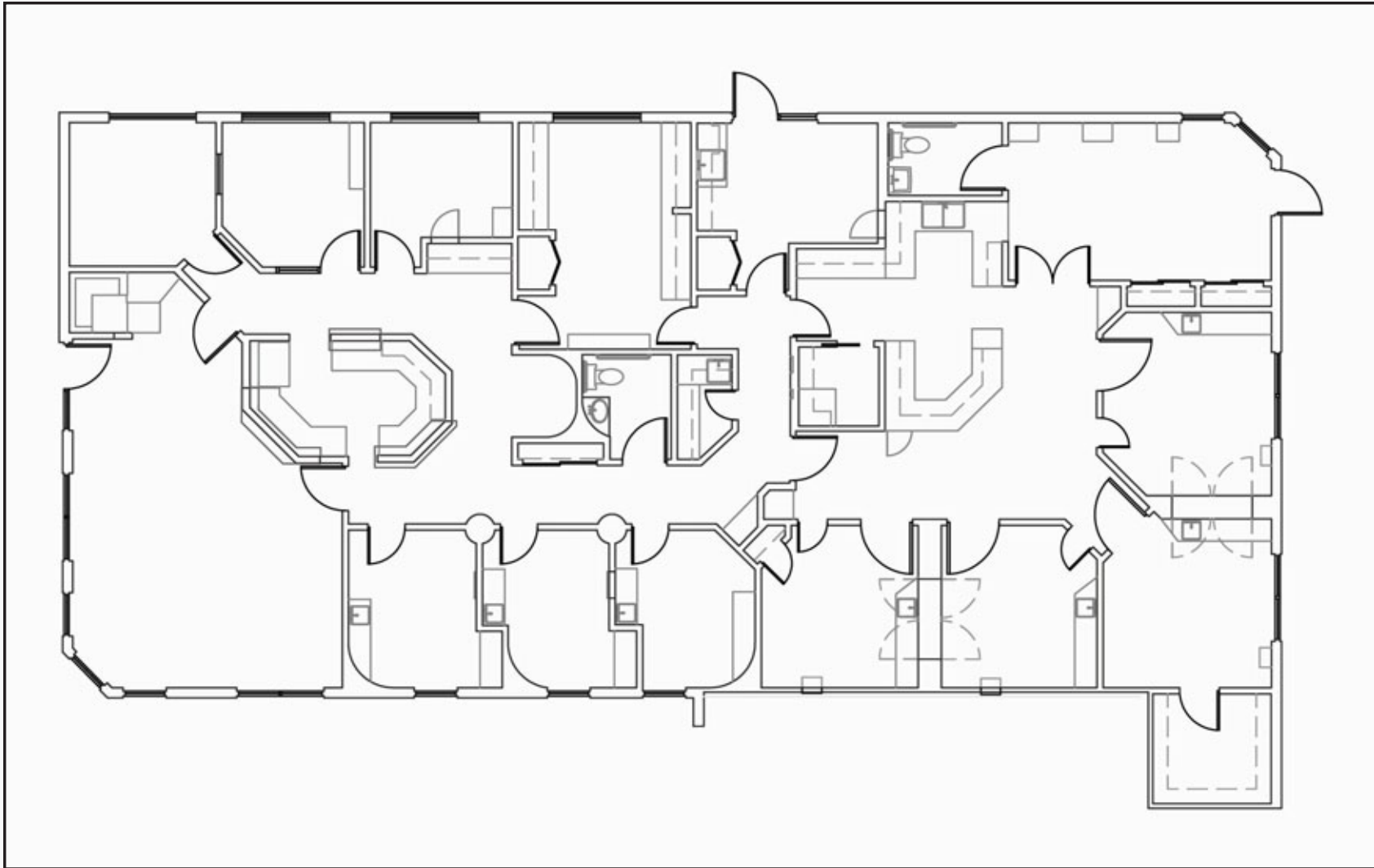


COMMERCIAL ADVISORS

OLIVE WEST PROFESSIONAL PLAZA - Glendale, AZ

Page 2

EXISTING FLOOR PLAN - SUITE 101 • 3,264 RSF





2777 East Camelback Road, Suite 230
 Phoenix, Arizona 85016
 (480) 994-8155 • (480) 994-8599
 www.GPE1.com



Nicholas A. Pelusio
 Executive Vice President
 (602) 505-3010
 nap@gpe1.com



Tracey Galligan
 Associate Vice President
 (480) 423-7927
 tgalligan@gpe1.com

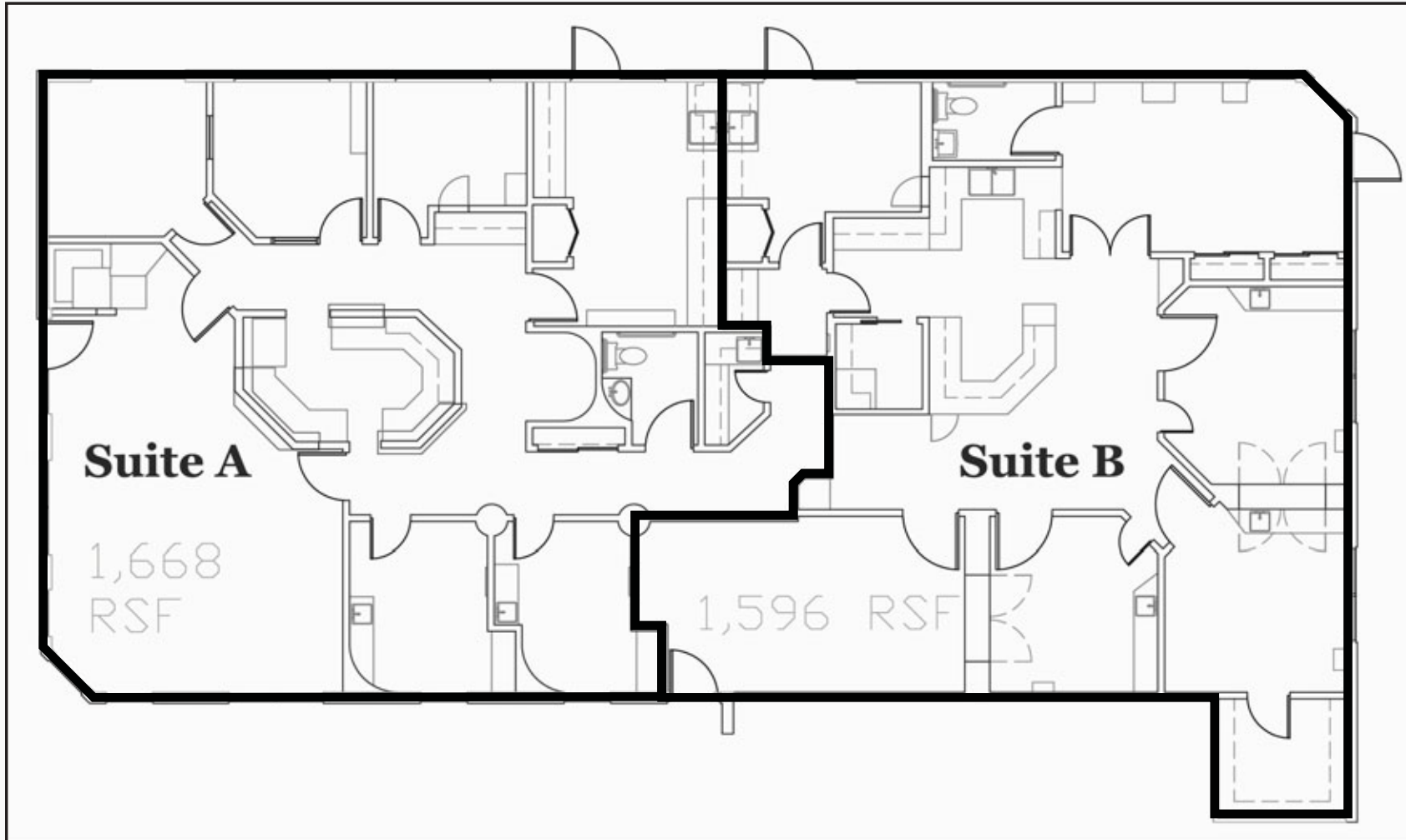


COMMERCIAL ADVISORS

OLIVE WEST PROFESSIONAL PLAZA - Glendale, AZ

Page 3

SUITE 101 - CONCEPTUAL FLOOR PLAN 1
SUITE A 1,668 RSF
SUITE B 1,596 RSF





2777 East Camelback Road, Suite 230
 Phoenix, Arizona 85016
 (480) 994-8155 • (480) 994-8599
 www.GPE1.com



Nicholas A. Pelusio
 Executive Vice President
 (602) 505-3010
 nap@gpe1.com



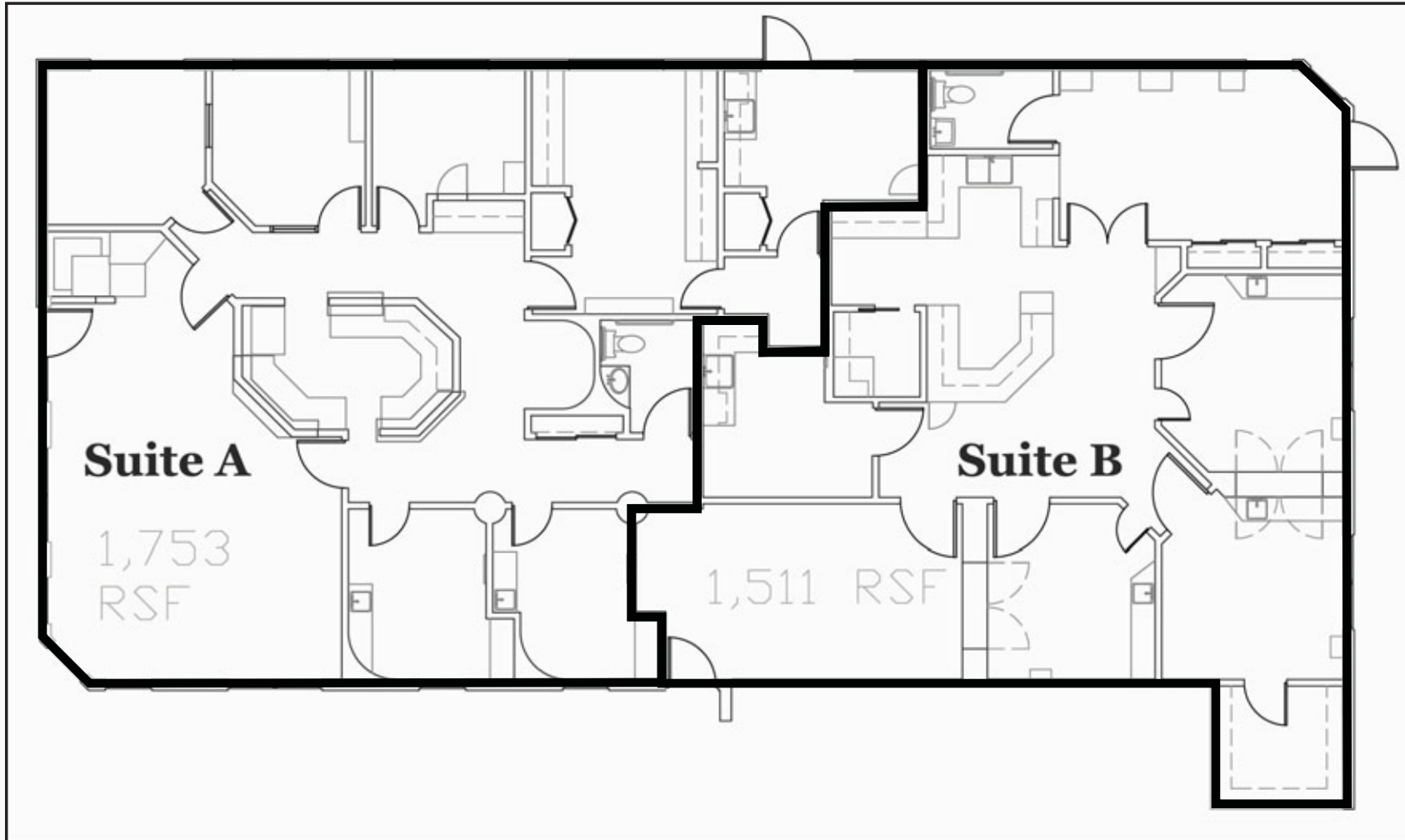
Tracey Galligan
 Associate Vice President
 (480) 423-7927
 tgalligan@gpe1.com



COMMERCIAL ADVISORS

OLIVE WEST PROFESSIONAL PLAZA - Glendale, AZ

SUITE 101 - CONCEPTUAL FLOOR PLAN 2
SUITE A 1,753 RSF
SUITE B 1,511 RSF





2777 East Camelback Road, Suite 230
 Phoenix, Arizona 85016
 (480) 994-8155 • (480) 994-8599
 www.GPE1.com



Nicholas A. Pelusio
 Executive Vice President
 (602) 505-3010
 nap@gpe1.com



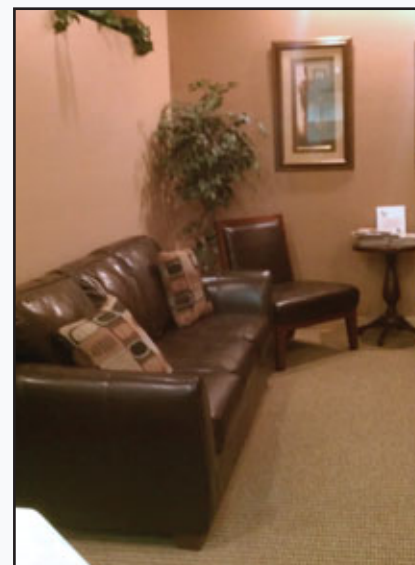
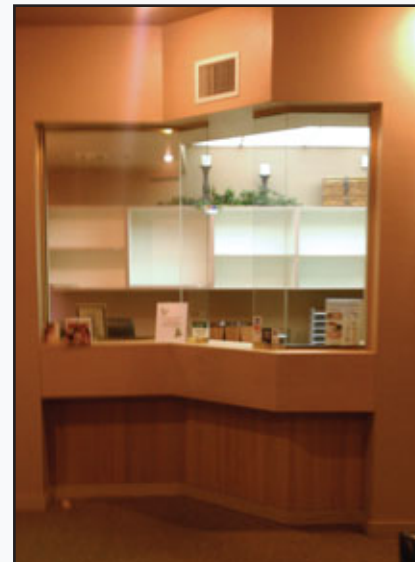
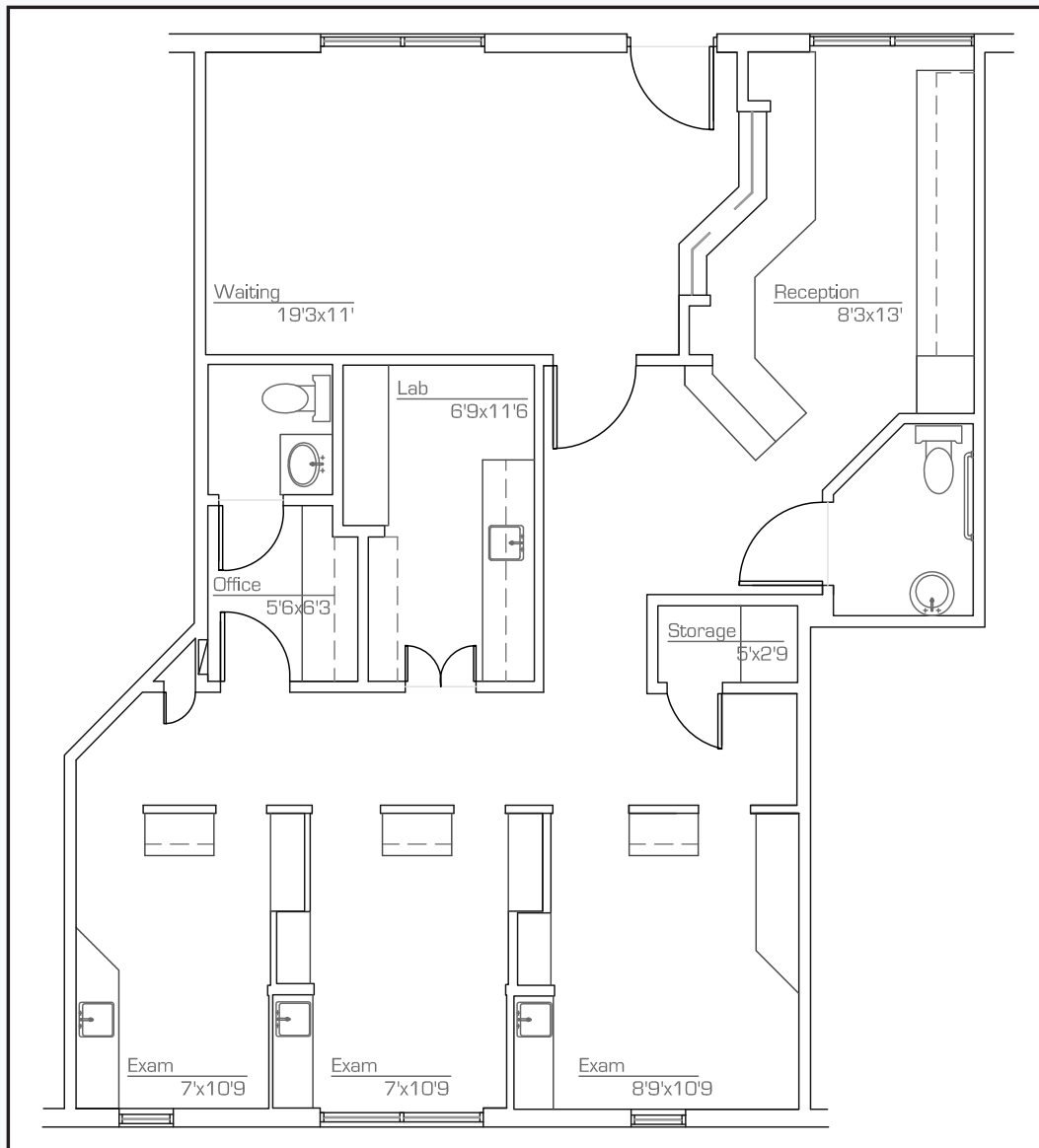
Tracey Galligan
 Associate Vice President
 (480) 423-7927
 tgalligan@gpe1.com



COMMERCIAL ADVISORS

OLIVE WEST PROFESSIONAL PLAZA - Glendale, AZ

SUITE 107 - 1,067 RSF - AS BUILT





2777 East Camelback Road, Suite 230
 Phoenix, Arizona 85016
 (480) 994-8155 • (480) 994-8599
 www.GPE1.com



Nicholas A. Pelusio
 Executive Vice President
 (602) 505-3010
 nap@gpe1.com

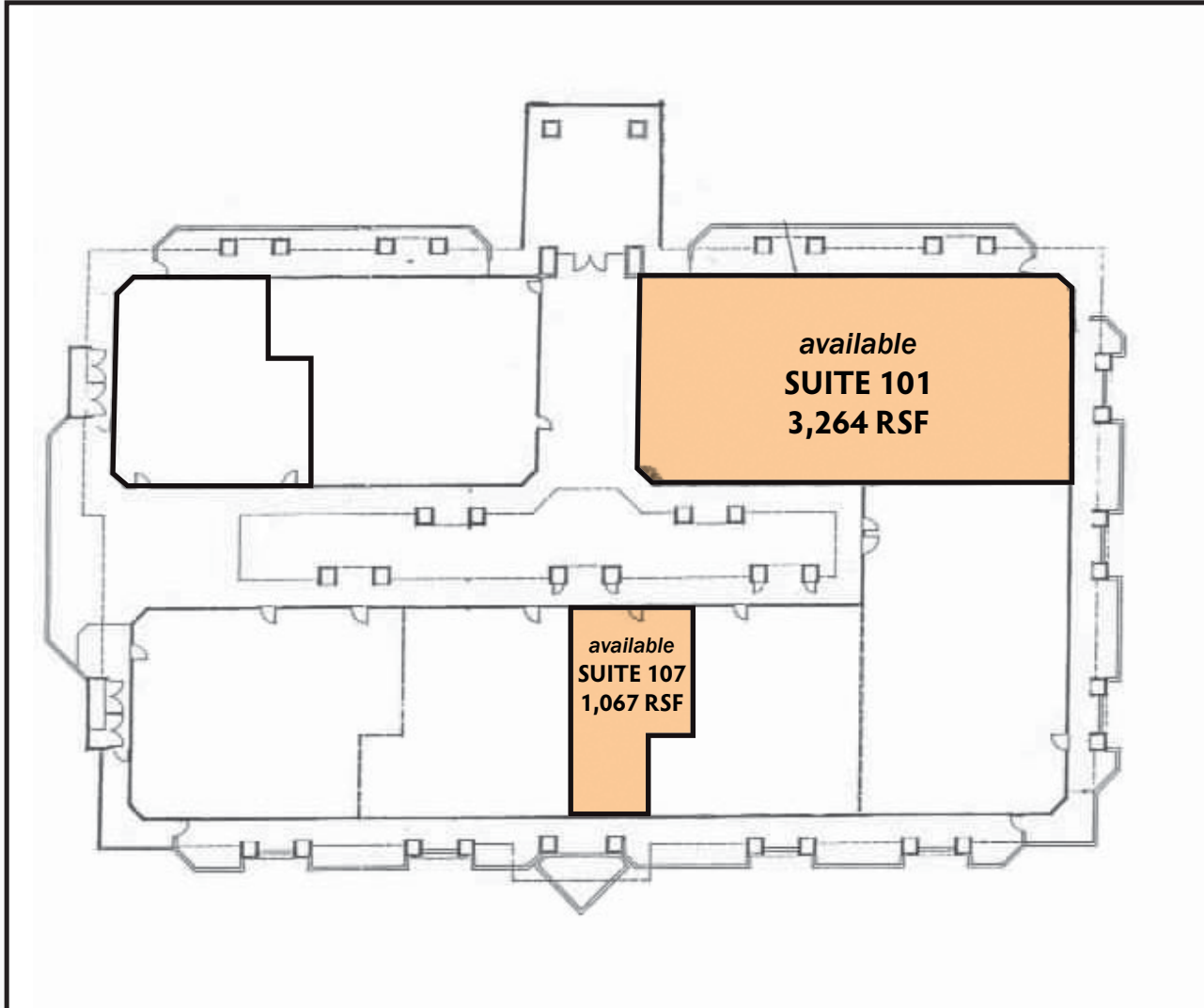


Tracey Galligan
 Associate Vice President
 (480) 423-7927
 tgalligan@gpe1.com



OLIVE WEST PROFESSIONAL PLAZA - Glendale, AZ

BUILDING PLAN



EXISTING TENANTS

<u>Suite #</u>	<u>Specialty</u>
102	General Dentistry
103	General Dentistry
104	Family & Cosmetic Dentistry
105	General Dentistry
106	Orthodontist
108	Family Medicine Medical Practice