



**50% OFF
FIRST YEAR'S RENT***

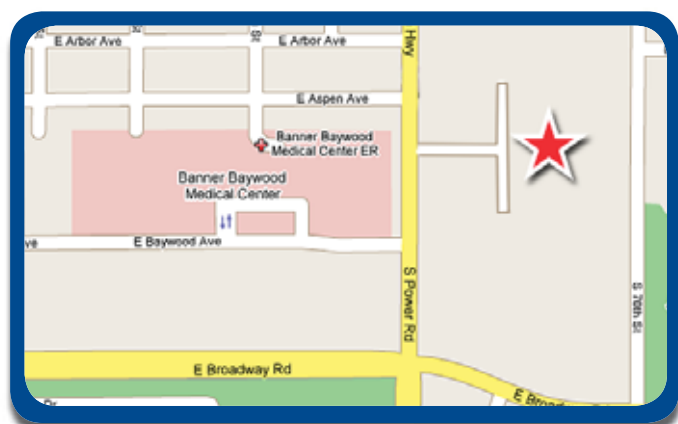


▼ POWER MEDICAL CENTER

215 S Power Rd

Mesa, AZ 85206

1/2 OFF RENT	<ul style="list-style-type: none"> • ONE YEAR OF 1/2 RENT on 5-Year Term or Longer.* * Limited time offer. Subject to change at any time. 	
Building Size	43,267 SF	
Availability	Suite 113	+/- 2,050 RSF
	Suite 207	+/- 3,334 RSF
	Suite 216	+/- 1,550 RSF
Lease Rate	\$20.00 per RSF Net of Electric and Janitorial	
Annual Increases	3.0%	
Tenant Improvements	Negotiable	
Load Factor	15.0%	
Parking	Covered, Reserved Available	
Amenities	Monument Signage Available	
Regional Hospitals	<ul style="list-style-type: none"> • Banner Baywood Medical Center • Mountain Vista Medical Center 	



For more information, contact:

Kathleen M. Morgan, CCIM
 (480) 994-1798
 kmorgan@gpe1.com

Trisha A. Talbot, CCIM
 (480) 423-7916
 ttalbot@gpe1.com

The information above has been obtained from sources believed reliable. While we do not doubt its accuracy, we have not verified it and make no guarantee, warranty, or representation about it, it is your responsibility to confirm accuracy and completeness. Any projections, opinions, assumptions, or estimates are used for example only and do not represent the current or future performance of the property. The value of this transaction to you depends on tax and other factors which should be evaluated by your tax, financial and legal advisors. You and your advisors should conduct a careful independent investigation of the property to determine to your satisfaction, the suitability of the property for your needs. © 2012 GPE Commercial Advisors

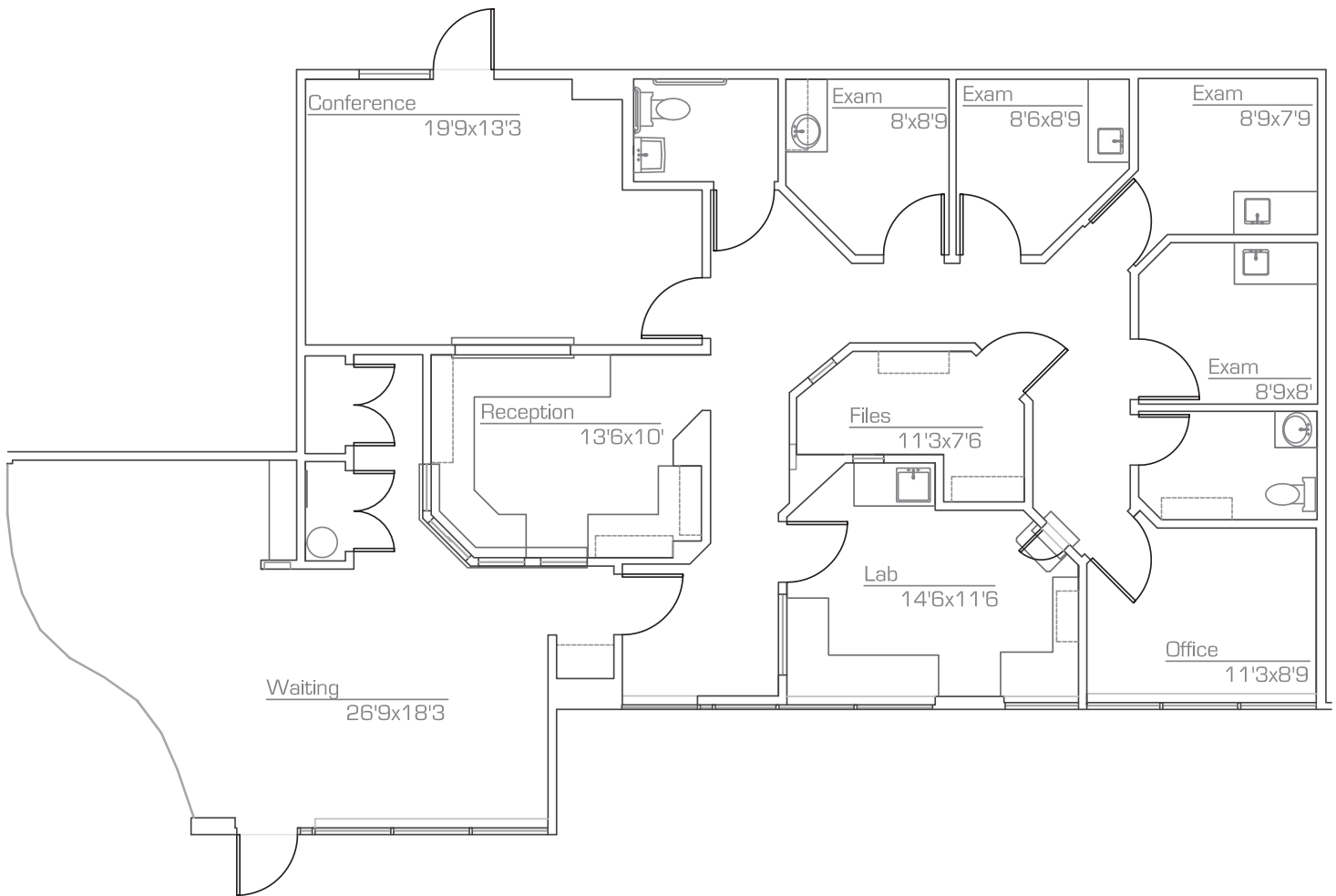


POWER MEDICAL CENTER

215 S Power Rd | Mesa, AZ 85206



South Building Suite 113 • +/- 2,050 RSF



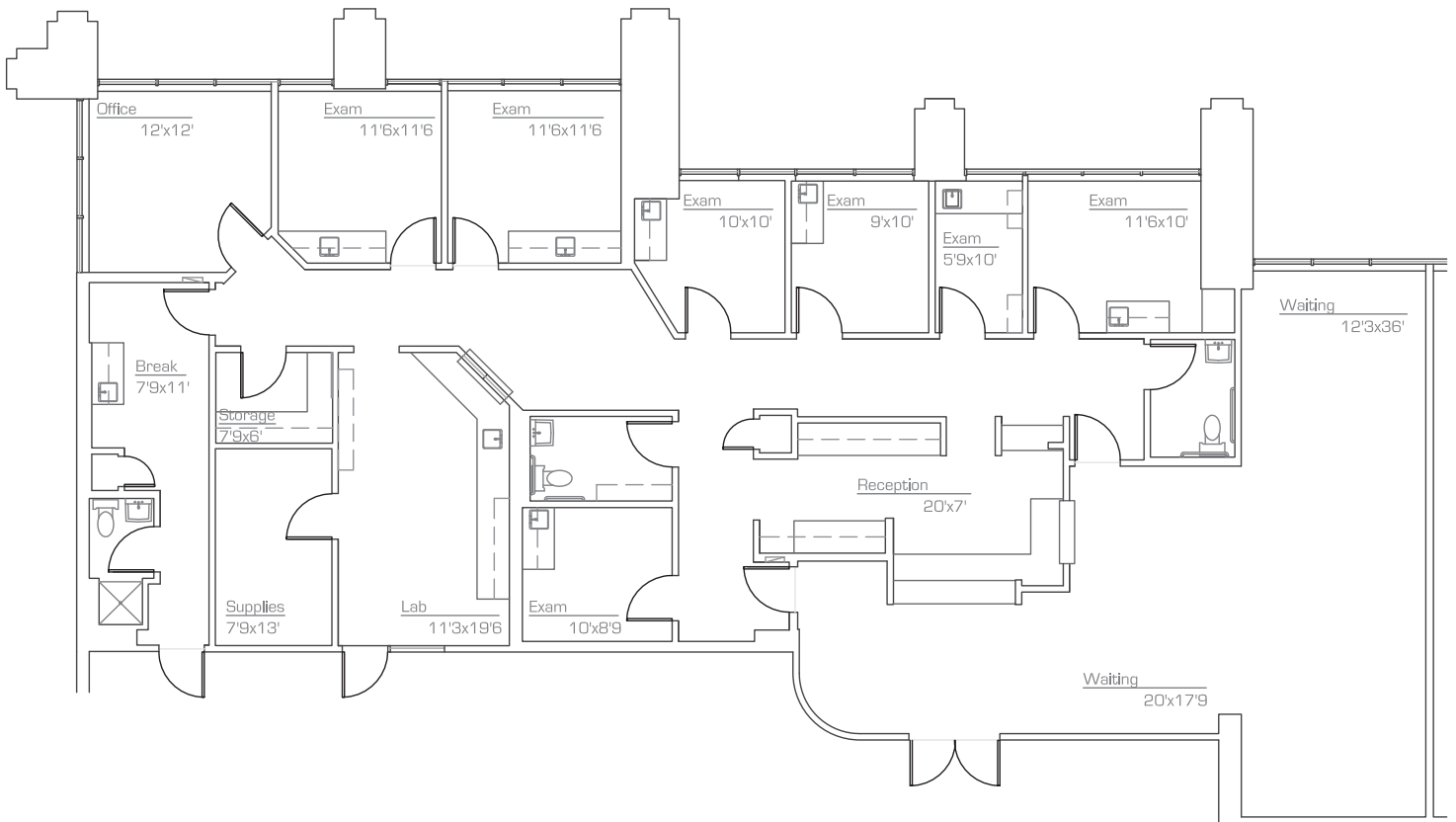


POWER MEDICAL CENTER

215 S Power Rd | Mesa, AZ 85206



South Building Suite 207 • +/- 3,334 RSF





POWER MEDICAL CENTER

215 S Power Rd | Mesa, AZ 85206



South Building Suite 216 • +/- 1,550 RSF

